

## **WASTE MANAGEMENT**

• COLLECTION • LOGISTICS • RECYCLING

## **PANACEA FOR EPR**

*BIGGEST EPR SERVICE PROVIDER*

## **CIRCULAR ECONOMY**

*MAKING MOST OF THE RESOURCES*

## **PLASTIC GRANULES**

*FRONT RUNNERS IN THE FIELD OF MANUFACTURING  
RECYCLED PLASTIC GRANULES*

## **SUSTAINABLE PRODUCTS**

*MADE OUT OF PLASTIC WASTE*

## **AWARDS AND RECOGNITION**



**COMPANY PROFILE**

# Biggest Service Provider Of EPR

**1 Lac MT**

Of Plastic Waste Collected

**100+** Training,  
Awareness

Campaigns and Collection  
Drives Conducted

**7000+** Ragpickers  
Livelihood

Enabled Pan India.

**75+** Collection Centres  
Pan India

**350+** Companies We  
Are Working With

**10K+** Sustainable  
Products

Distributed

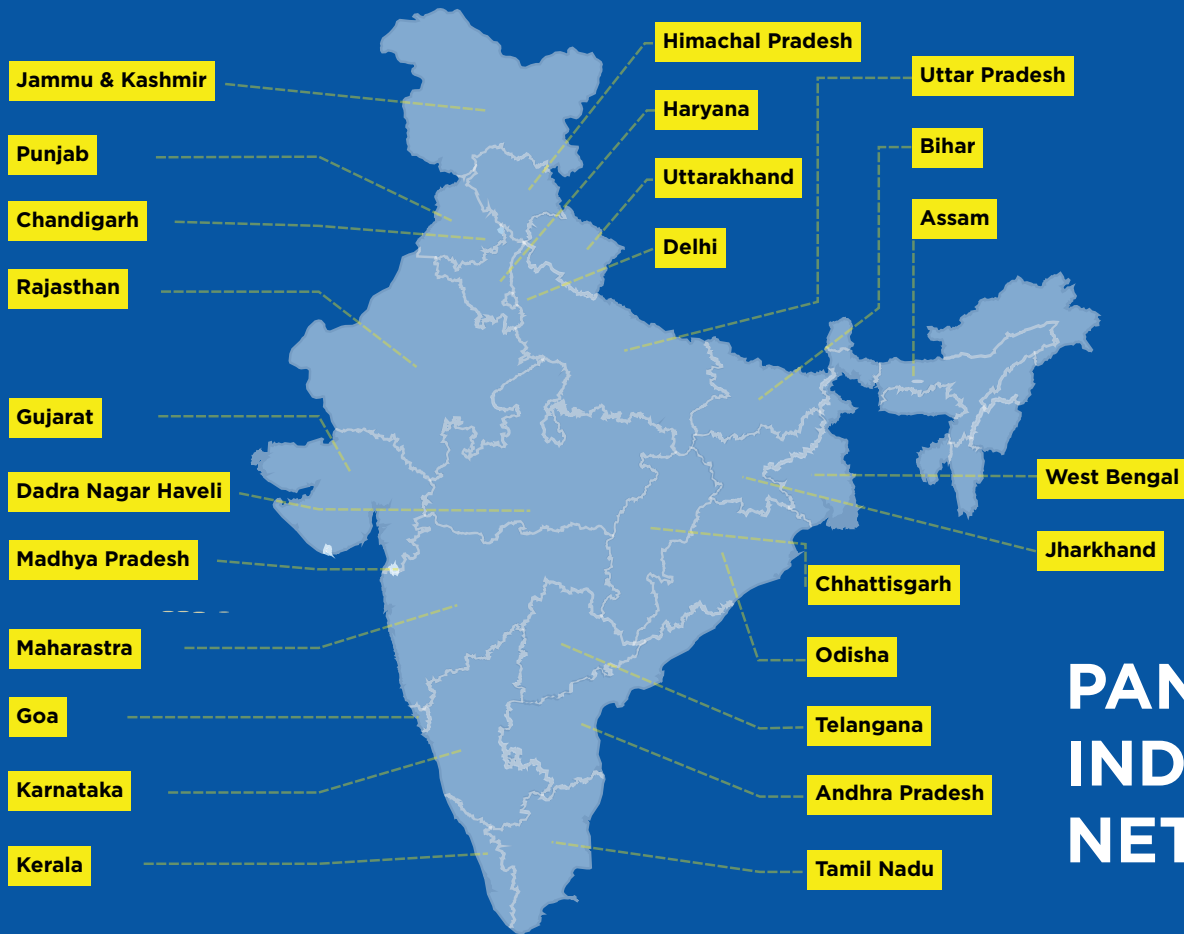
**30+** Disposal Centres  
Pan India

**20+** ULB Tie-Ups  
Pan India

**10+** New Recycling  
Facility Setting Up  
Across India

## *We are associated with esteemed organizations:*

- All India Plastic Manufacturers Association (AIPMA)
- Flexible Packaging Industries & Traders Association
- Indian Centre of Plastic & Environment (ICPE)
- Plex Council of India
- Organization of Plastic Processors of India (OPPI)
- India Plastic Institute (IPI)
- MRAI - Material Recycling Association of India
- All India Plastic Traders Association (AIPTA)
- REPRO.



# PAN INDIA NETWORK

# About us

## *Leading The Way In Plastic Waste Recycling For Over 5 Decades*

*Incepted in 1969, The Shakti Plastic Industries is a Mumbai based company that recycles all types of plastic waste, and one of the leading recyclers of polymer waste in India. Established by Mr. Vishwanath Podaar, the company has been built over a legacy of 3 generations, spearheaded by leaders who have shown relentless passion and responsibility towards building and sustaining a clean and safe environment for our future generations as well as for Mother Earth.*

*For the past 5 decades, Shakti Plastics has been recognized widely as a pioneer in the field of plastic waste management. We have rag pickers network, collection center & logistics partner PAN India for collection, segregation and transportation of post consumer and industrial plastic waste management. The Shakti Plastic Industries is authorized by CPCB / SPCB for collection of plastic waste and scrap.*



*“Properly disposed drywaste at source can reach end recyclers, where waste can be turned to value.”*

*- Rahul V. Podaar  
Managing Director*



# Our Strength

*Our factory at Palghar is equipped with continuous Electricity supply on 33KV Express Feeder heavy line with energy supply of 2500HP for factory and four Bore wells for uninterrupted water supply. And can process upto 30,000 Metric Tons of plastic waste per annum.*



***Collected more than 1 lacs metric tons of waste***

- ***Tie-ups with Municipal Corporations for bulk quantities***
- ***Collection Partners with more than 20 years of rich experience***
- ***Collecting MLP & NON-MLP both types of waste***
- ***Training the bottom of pyramid – the rag pickers***
- ***Closing the loop via tie-ups with Cement Kiln to dispose Non-Recyclable waste***



# *Front runners in the field of manufacturing recycled plastic granules*

*We are equipped with latest  
equipements known to recycling  
industry and recycling upto 30MT  
of waste annually*



*Pictures From Our  
Factory At Manor, Palhar*

# Recycled Plastic Granules

*We are registered recycler and recycle all grades of plastic namely PP, HDPE, LDPE, ABS, HIPS, PS, NYLON, etc.*

*We normally procure these materials from industries as well as consumers. These are in different forms like article waste, lumps, regrades, aggro films, rolls, sheets, bails, etc. These materials are converted into granules that we have.*

**RECYCLING NON-RECYCLABLE MULTILAYER PLASTIC WASTE**  
***Patent Application No: 201921018722***

***CIRCULAR ECONOMY  
OF PLASTICS***





# PROCESSING ALL TYPES OF PLASTIC WASTE



PETE

POLYETHYLENE  
TEREPHTHALATE

Beverage bottles, plastic  
cans, fabric fibers and  
carpets, some bottles for  
hygiene products



HDPE

HIGH DENSITY  
POLYETHYLENE

Bottles for household  
chemicals, milk cans, toys,  
buckets, boxes, pots, gardens  
furniture, garbage cans



PVC

POLYVINYL  
CHLORIDE

Credit cards, window frames,  
drainpipes, protective  
sheath of wires and cables,  
leatherette



LDPE

LOW DENSITY  
POLYETHYLENE

Packaging film, bags,  
bubble wrap, soft bottles,  
wire insulation



PP

POLYPROPYLENE

Bottle caps, drinking straws,  
food containers, insulating  
bags, woolen fabrics and  
carpets, tarpaulin, diapers



PS

POLYSTYRENE

Plastic cups, egg containers,  
meat pads, packaging filler,  
clothes hangers, yogurt  
containers, insulation, toys



OTHER

Nylon fabrics, baby bottles,  
compact disks, medical  
containers, auto parts,  
bottles for coolers



garbage



garbage  
removal



delivery  
processing



waste  
recycling



delivery



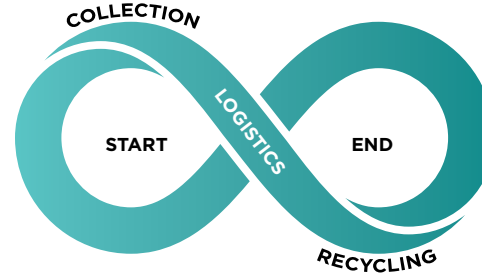
use

# EXTENDED PRODUCERS RESPONSIBILITY

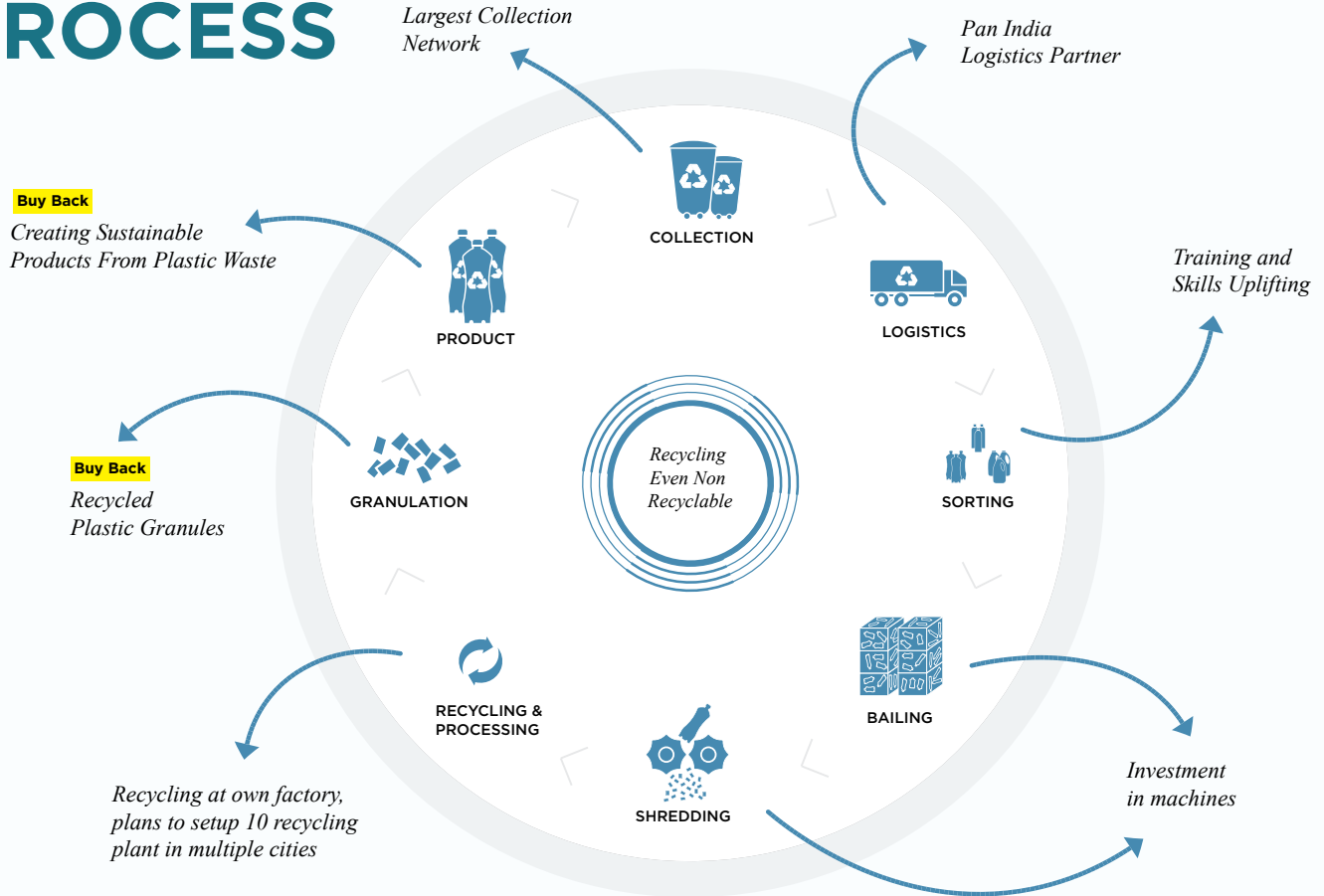
*We Have Largest Waste Collection Network Including Government Collection Centers*

*Waste Collection Sources:*

- *Urban Local Bodies / Municipalities*
- *Rag Pickers & Rag Collectors*
- *Collection Drives*
- *Kabadiwala / Scrap Dealers*
- *Industrial Waste*



# PROCESS



# CIRCULAR ECONOMY



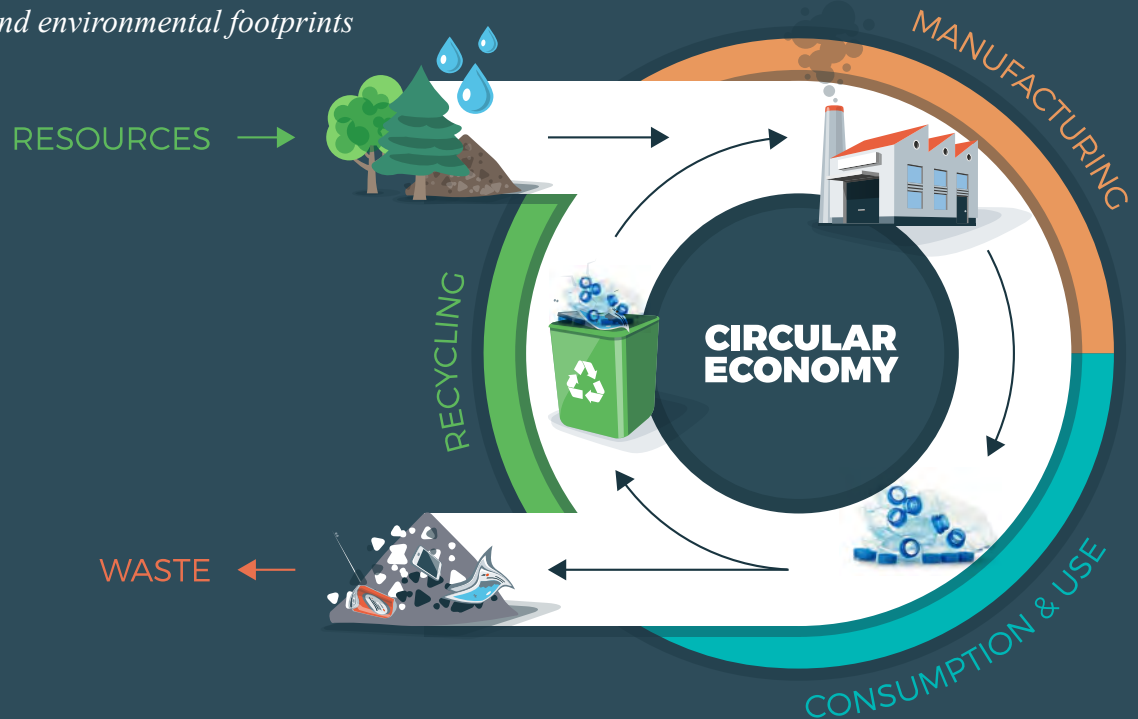
*Circular Economy is an economic model which maximizes the use of the materials extracted from nature. Each non-biodegradable material is used, reused, recycled and remade in order to reduce the negative impact on the environment*

---

*The resources we have with us are very limited. Every day, we consume in fossil fuels the equivalent of 2,600 years of accumulation of oil. Also, the linear economic model produces several tonnes of plastic.*

*Our Objective is*

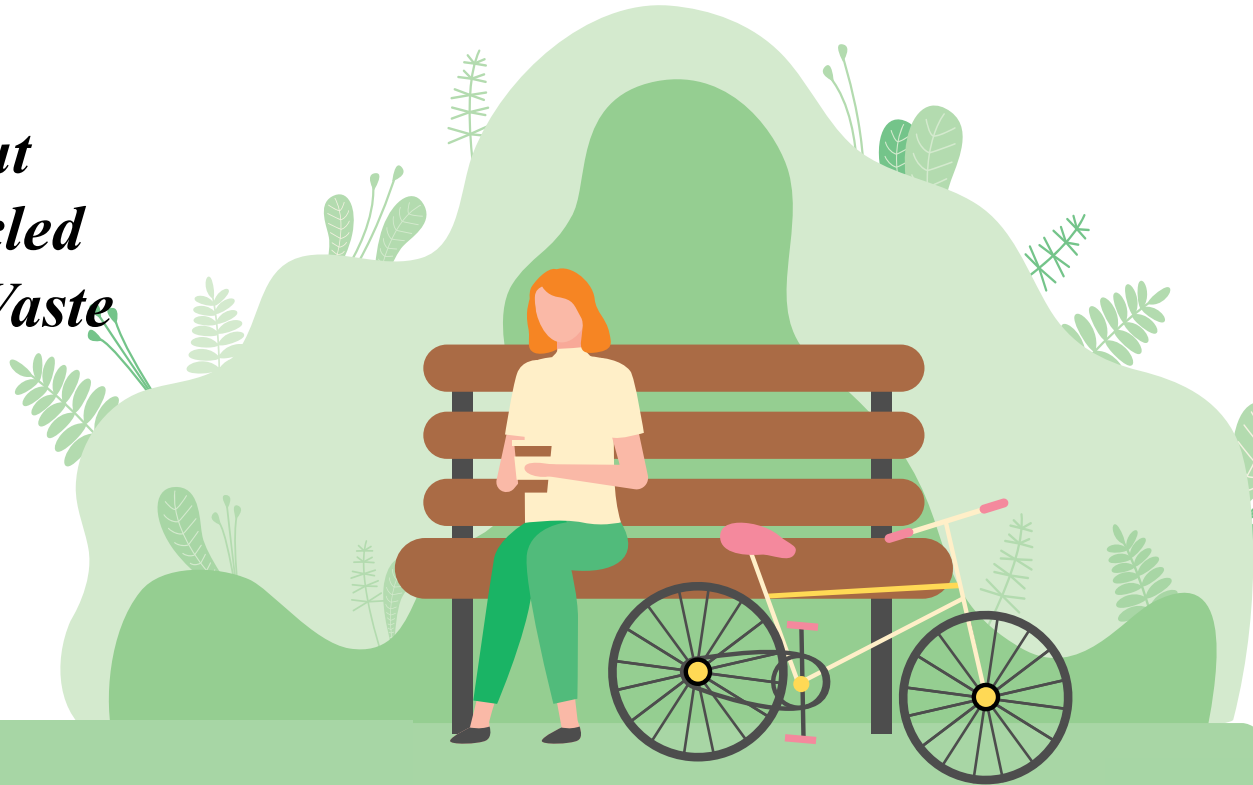
- *Enable re-manufacturing and Implement high-quality recycling*
- *Reducing carbon and environmental footprints*



# SUSTAINABLE PRODUCTS

*Converting plastic waste to range of products like benches, pallets, dustbins, crates, stationery products and more...*

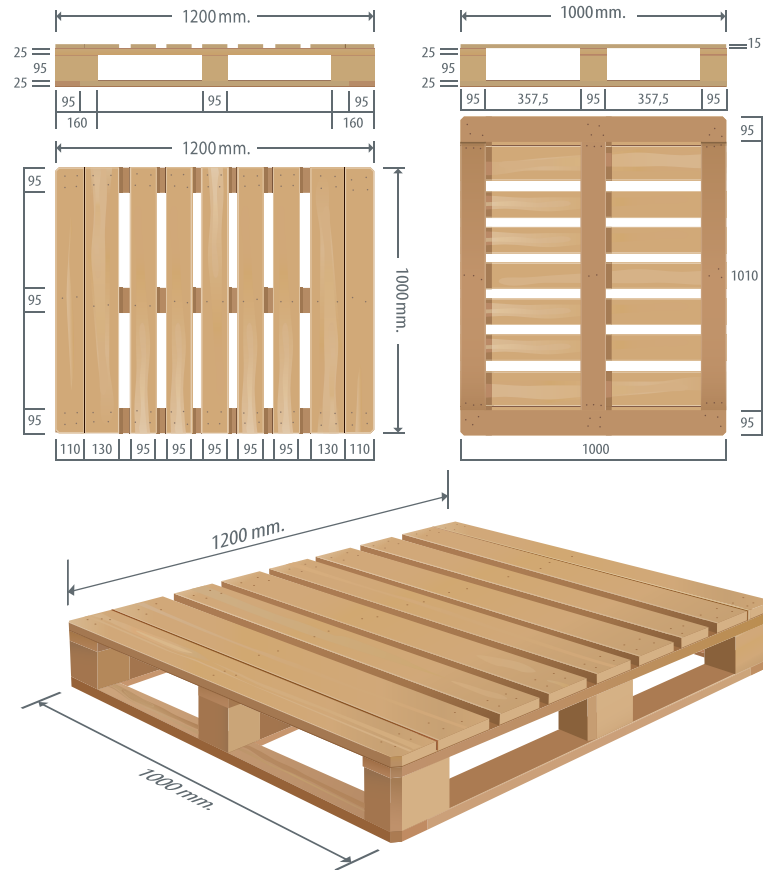
***Benches  
Made Out  
Of Recycled  
Plastic Waste***



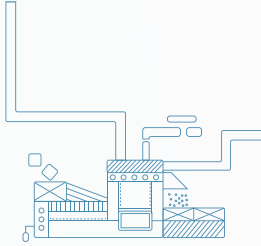


# *Pallets Made Out Of Recycled Plastic Waste*

- *Products Made From Post Consumer Waste - Recycled Granules*
- *Ecofriendly Product*  
*Developed under a sustainable production process*
- *Cost-Effective*
- *Sturdy and long-lasting*
- *Designed out of waste and pollution,*
- *Conservation of natural resources.*



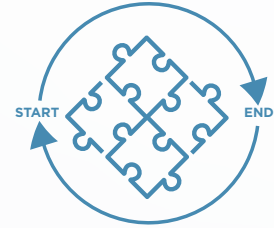
# What makes us better



***WE HAVE ONE OF THE BEST  
TECHNOLOGIES AND  
INFRASTRUCTURE***



***TRACEABLE AND TRANSPARENT  
CRM SYSTEM FACILITATES REALTIME  
PROGRESS TRACKING OF EPR TARGETS***



***CLOSING THE LOOP IN  
RECYCLING WITH START TO  
END SOLUTION ON PLASTIC  
WASTE MANAGEMENT***



***IN OUR ORGANIZATION WOMEN  
CONTRIBUTE TO MORE THAN 30% OF  
TOTAL WORKFORCE***



***GENERATING EMPLOYMENT FOR  
DIFFERENTLY ABLED***



***DIRECT TIE-UPS WITH  
GOVERNMENT BODIES FOR WASTE  
COLLECTION CENTER***



*"We do not inherit the Earth from our ancestors, we borrow it from our children."  
– Native American Proverb"*

## *Mission*

*To divert valuable waste from our landfills, water-bodies, drains & environment & back into the economy through a combination of education & awareness programs, implementation of segregation at source.*

*Repro organizes programs and events (independently and in association with corporates) on a local basis in communities to assist and ensure diversion of waste from our drains, water bodies and landfills and back into the economy instead, primarily by diverting waste to recycling and co-processing units. This is done through education/awareness sessions, training for segregation of waste at source, and diversion of such segregated waste to composting (onsite or offsite), recycling or co-processing units. Repro also helps corporates implement and achieve their EPR targets.*

[www.recyclepro.co](http://www.recyclepro.co)

## *Services*

*Awareness and Education Programs  
Recycling Programs  
Corporate Social Responsibility  
EPR Support*



# RESPONSIBILITY

*Organizing various social activities for cleanliness of our mother land and spreading awareness.*

***Pictures are from various social activities we conducted across the country.***



# Awards & Recognition



*Economic Times Polymer Award 2020*

*For: Excellence In Recycling And Next Generation Leader Of The Year Award*



**SWACHH BHARAT AWARD**  
**19<sup>TH</sup> Feb 2019**



**SWACHH BHARAT AWARD**  
**19<sup>TH</sup> Feb 2019**

**FOR: WASTE MANAGEMENT -  
COLLECTION, LOGISTICS AND  
RECYCLING**



**WORLD ENVIROMENT EXPO**  
**10<sup>TH</sup> FEB 2019**

# Contact us



## *The Shakti Plastic Industries*

### **REGISTERED OFFICE:**

15/16, Govind Bhavan, Chincholi,  
S. V. Road, Malad West,  
Mumbai-400 064,  
Maharashtra, India  
Tel: 022 28725946 / 022 2872 1734

### **FACTORY ADDRESS:**

Gut No. 159, Village Nandgaon, Behind  
Rolex Inn Hotel, On Western Express  
Highway No. 8, Manor, Dist. Palghar,  
MH-India.  
Tel: +91(2525) 237238

**Email:** [info@shaktiplasticinds.com](mailto:info@shaktiplasticinds.com)

**Website:** [www.shaktiplasticinds.com](http://www.shaktiplasticinds.com)

Follow us:



### **Registrations**



ISO 9001:2015

SEDEX REGISTERED

#### **LEGAL NOTICE**

All rights reserved. The content of this brochure is subject to change without prior notice. All images, statements, designs, offerings included in this brochure are of the company. Unauthorised copying, reproduction and publishing of any content / product of this brochure is prohibited. The Company reserves its rights to suitable suggestions and/or complaints send an email to [info@shaktiplasticinds.com](mailto:info@shaktiplasticinds.com)