

WASTE MANAGEMENT

• COLLECTION • LOGISTICS • RECYCLING

PANACEA FOR EPR

BIGGEST EPR SERVICE PROVIDER

CIRCULAR ECONOMY

MAKING MOST OF THE RESOURCES

PLASTIC GRANULES

*FRONT RUNNERS IN THE FIELD OF MANUFACTURING
RECYCLED PLASTIC GRANULES*

SUSTAINABLE PRODUCTS

MADE OUT OF PLASTIC WASTE

AWARDS AND RECOGNITION



COMPANY PROFILE

Biggest Service Provider Of EPR

1 Lac MT

Of Plastic Waste Collected

100+ Training,
Awareness

Campaigns and Collection
Drives Conducted

7000+ Rag-pickers
Livelihood

Enabled Pan India.

75+ Collection Centers
Pan India

350+ Companies We
Are Working With

10K+ Sustainable
Products

Distributed

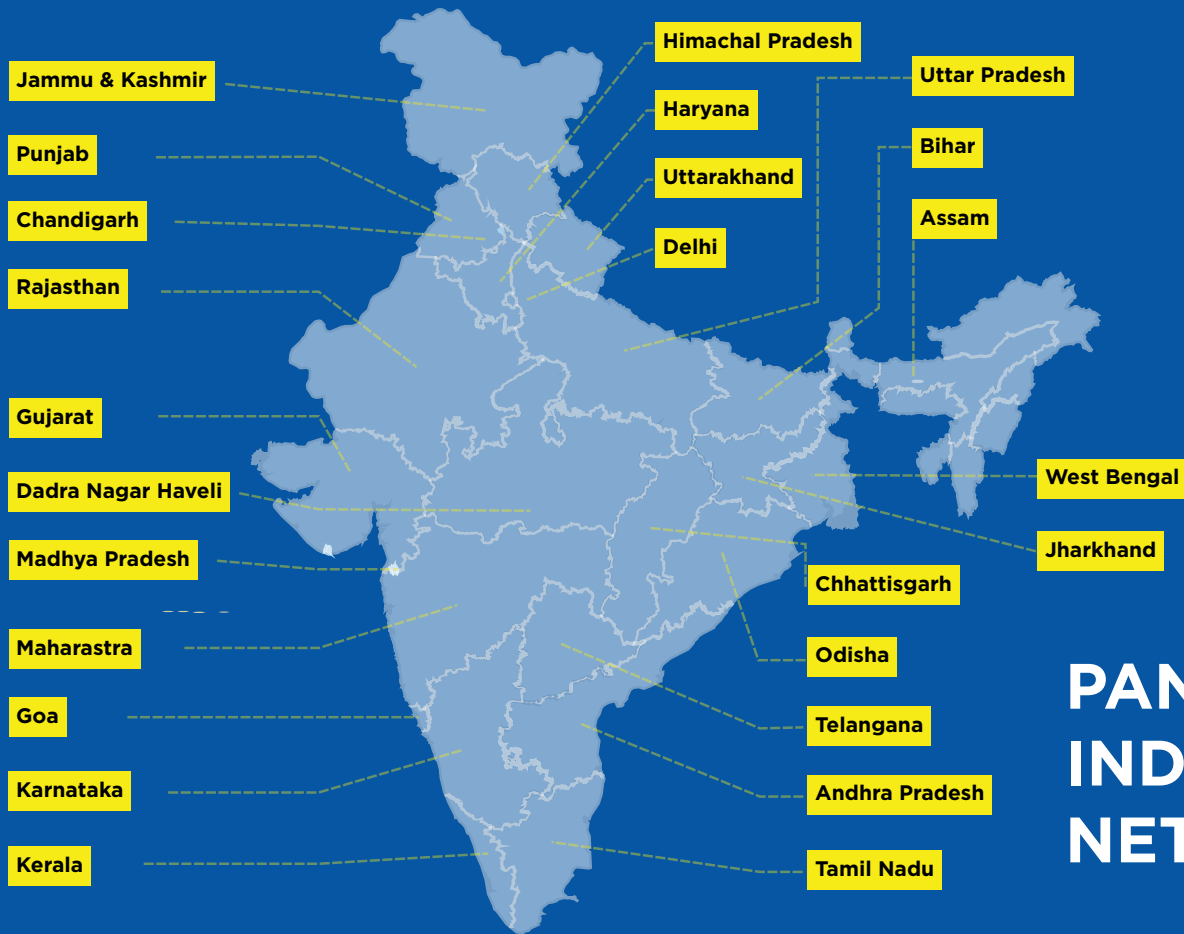
30+ Disposal Centers
Pan India

20+ ULB Tie-Ups
Pan India

10+ New Recycling
Facility Setting Up
Across India

We are associated with esteemed organizations:

- *All India Plastic Manufacturers Association (AIPMA)*
- *Flexible Packaging Industries & Traders Association*
- *Indian Centre of Plastic & Environment (ICPE)*
- *Plex Council of India*
- *Organization of Plastic Processors of India (OPPI)*
- *India Plastic Institute (IPI)*
- *MRAI - Material Recycling Association of India*
- *All India Plastic Traders Association (AIPTA)*
- *REPRO.*



PAN INDIA NETWORK

About us

Leading The Way In Plastic Waste Recycling For Over 5 Decades

Incepted in 1969, The Shakti Plastic Industries is a Mumbai based company that recycles all types of plastic waste, and one of the leading recyclers of polymer waste in India. Established by Mr. Vishwanath Podaar, the company has been built over a legacy of 3 generations, spearheaded by leaders who have shown relentless passion and responsibility towards building and sustaining a clean and safe environment for our future generations as well as for Mother Earth.

For the past 5 decades, Shakti Plastics has been recognized widely as a pioneer in the field of plastic waste management. We have rag pickers network, collection center & logistics partner PAN India for collection, segregation and transportation of post consumer and industrial plastic waste management. The Shakti Plastic Industries is authorized by CPCB / SPCB for collection of plastic waste and scrap.



“Properly disposed drywaste at source can reach end recyclers, where waste can be turned to value.”

*- Rahul V. Podaar
Managing Director*



Our Strength

Our factory at Palghar is equipped with continuous Electricity supply on 33KV Express Feeder heavy line with energy supply of 2500HP for factory and four Bore wells for uninterrupted water supply. And can process upto 30,000 Metric Tons of plastic waste per annum.



Collected more than 1 lacs metric tons of waste

- ***Tie-ups with Municipal Corporations for bulk quantities***
- ***Collection Partners with more than 20 years of rich experience***
- ***Collecting MLP & NON-MLP both types of waste***
- ***Training the bottom of pyramid – the rag pickers***
- ***Closing the loop via tie-ups with Cement Kiln to dispose Non-Recyclable waste***

Front runners in the field of manufacturing recycled plastic granules

*We are equipped with latest
equipments known to recycling
industry and recycling upto 30MT
of waste annually*



*Pictures From Factory At
Manor, Palghar, Maharashtra*

Recycled Plastic Granules

We are registered recycler and recycle all grades of plastic namely PP, HDPE, LDPE, ABS, HIPS, PS, NYLON, etc.

We normally procure these materials from industries as well as consumers. These are in different forms like article waste, lumps, regrades, aggro films, rolls, sheets, bails, etc. These materials are converted into granules that we have.

RECYCLING NON-RECYCLABLE MULTILAYER PLASTIC WASTE
Patent Application No: 201921018722

**CIRCULAR ECONOMY
OF PLASTICS**



PROCESSING ALL TYPES OF PLASTIC WASTE



PETE

POLYETHYLENE
TEREPHTHALATE

Beverage bottles, plastic
cans, fabric fibers and
carpets, some bottles for
hygiene products



HDPE

HIGH DENSITY
POLYETHYLENE

Bottles for household
chemicals, milk cans, toys,
buckets, boxes, pots, gardens
furniture, garbage cans



PVC

POLYVINYL
CHLORIDE

Credit cards, window frames,
drainpipes, protective
sheath of wires and cables,
leatherette



LDPE

LOW DENSITY
POLYETHYLENE

Packaging film, bags,
bubble wrap, soft bottles,
wire insulation



PP

POLYPROPYLENE

Bottle caps, drinking straws,
food containers, insulating
bags, woolen fabrics and
carpets, tarpaulin, diapers



PS

POLYSTYRENE

Plastic cups, egg containers,
meat pads, packaging filler,
clothes hangers, yogurt
containers, insulation, toys



OTHER

Nylon fabrics, baby bottles,
compact disks, medical
containers, auto parts,
bottles for coolers



garbage



garbage
removal



delivery
processing



waste
recycling



delivery



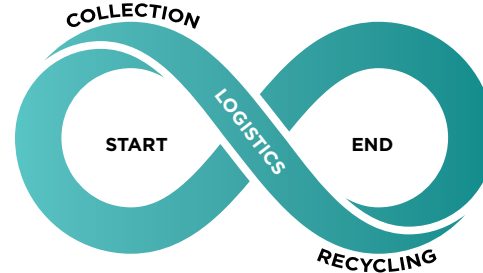
use

EXTENDED PRODUCERS RESPONSIBILITY

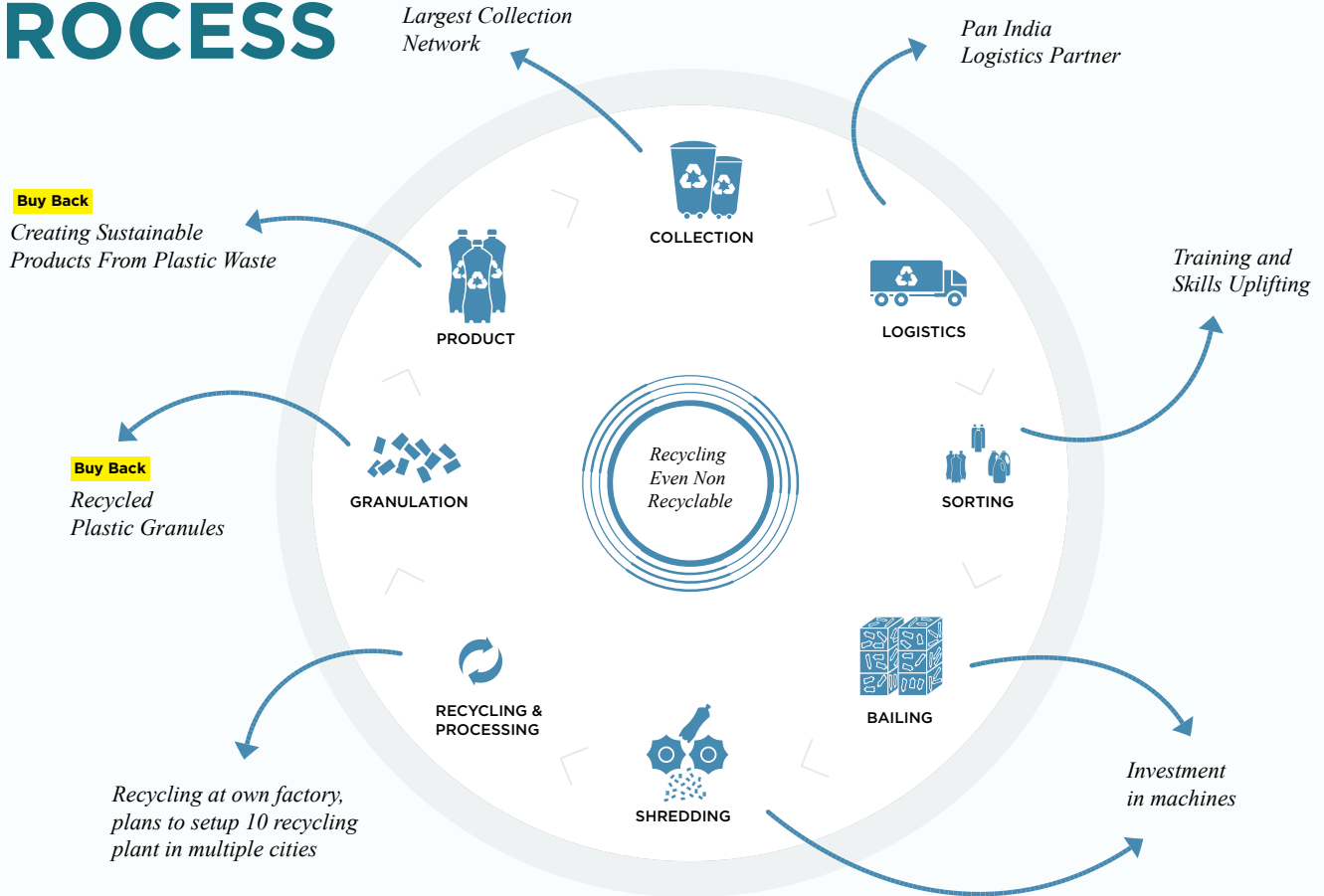
We Have Largest Waste Collection Network Including Government Collection Centers

Waste Collection Sources:

- *Urban Local Bodies / Municipalities*
- *Rag Pickers & Rag Collectors*
- *Collection Drives*
- *Kabadiwala / Scrap Dealers*
- *Industrial Waste*



PROCESS



CIRCULAR ECONOMY

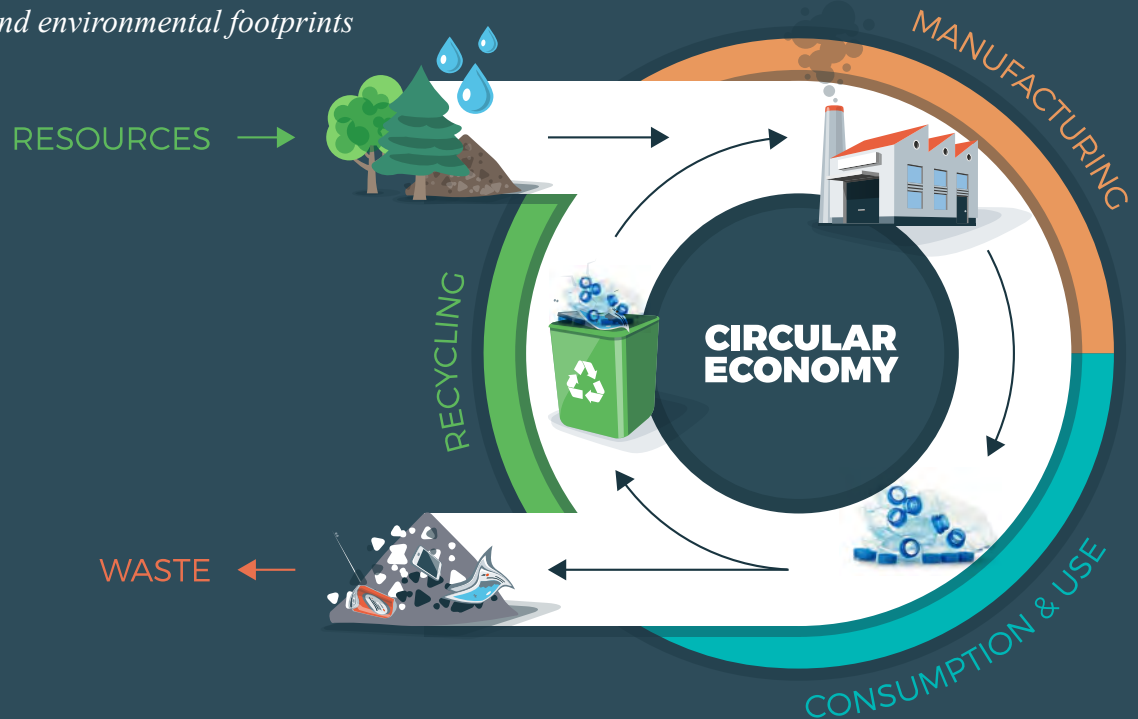


Circular Economy is an economic model which maximizes the use of the materials extracted from nature. Each non-biodegradable material is used, reused, recycled and remade in order to reduce the negative impact on the environment

The resources we have with us are very limited. Every day, we consume in fossil fuels the equivalent of 2,600 years of accumulation of oil. Also, the linear economic model produces several tonnes of plastic.

Our Objective is

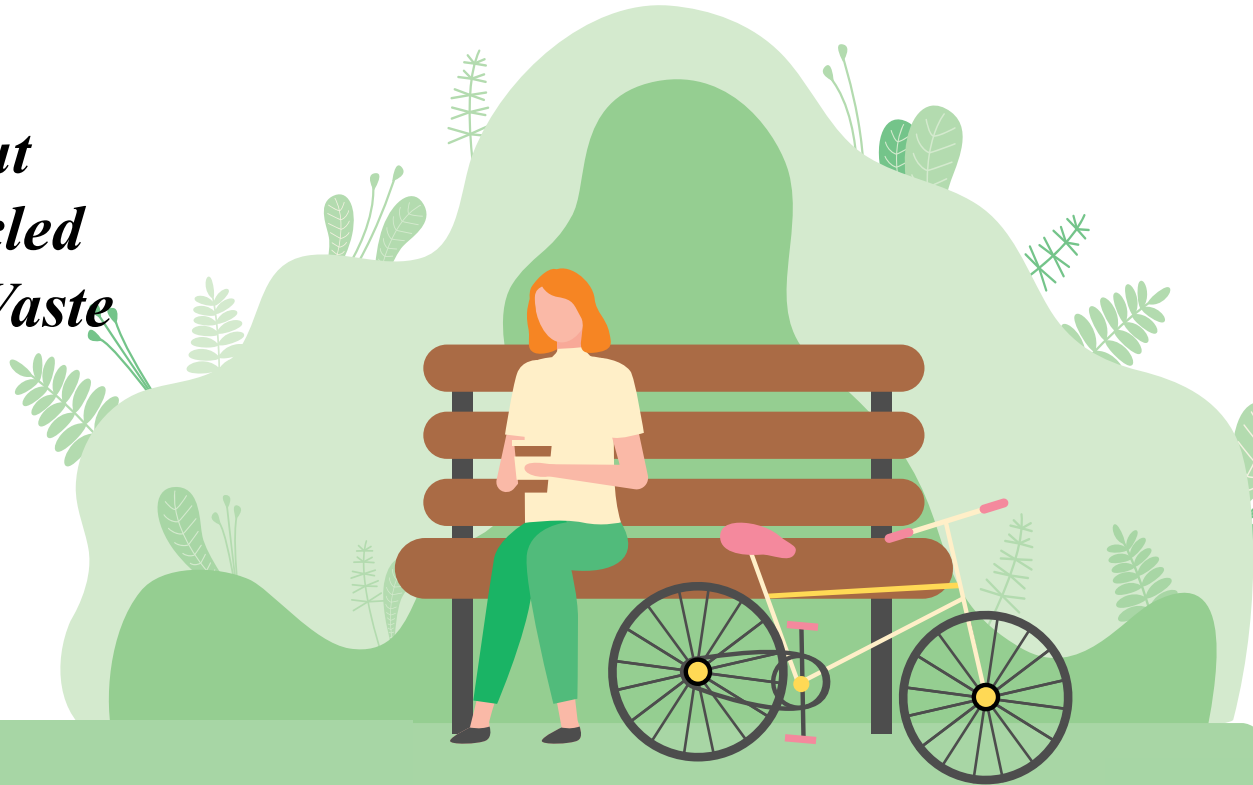
- *Enable re-manufacturing and Implement high-quality recycling*
- *Reducing carbon and environmental footprints*



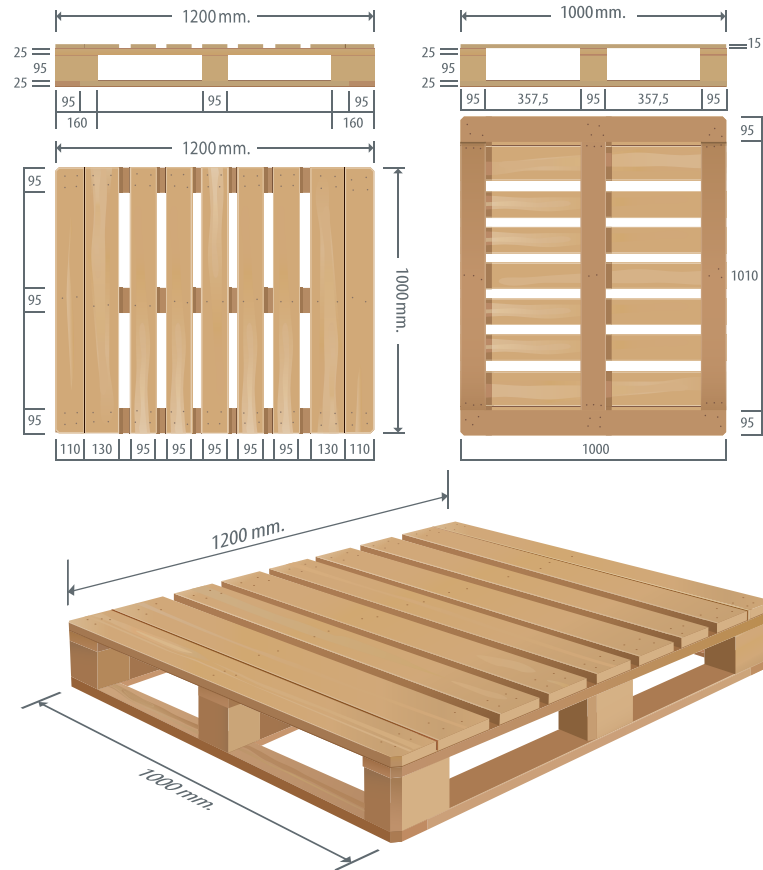
SUSTAINABLE PRODUCTS

Converting plastic waste to range of products like benches, pallets, dustbins, crates, stationery products and more...

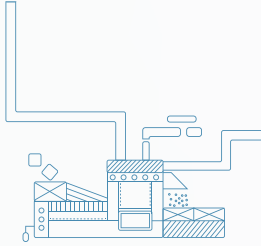
***Benches
Made Out
Of Recycled
Plastic Waste***



-



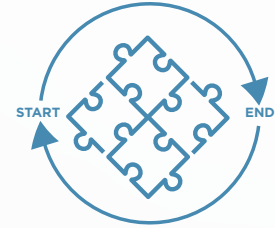
What makes us better



***WE HAVE ONE OF THE BEST
TECHNOLOGIES AND
INFRASTRUCTURE***



***TRACEABLE AND TRANSPARENT
CRM SYSTEM FACILITATES REAL TIME
PROGRESS TRACKING OF EPR TARGETS***



***CLOSING THE LOOP IN
RECYCLING WITH START TO
END SOLUTION ON PLASTIC
WASTE MANAGEMENT***



***IN OUR ORGANIZATION WOMEN
CONTRIBUTE TO MORE THAN 30% OF
TOTAL WORKFORCE***



***GENERATING EMPLOYMENT FOR
DIFFERENTLY ABLED***



***DIRECT TIE-UPS WITH
GOVERNMENT BODIES FOR WASTE
COLLECTION CENTER***



*"We do not inherit the Earth from our ancestors, we borrow it from our children."
– Native American Proverb"*

Mission

To divert valuable waste from our landfills, water-bodies, drains & environment & back into the economy through a combination of education & awareness programs, implementation of segregation at source.

Repro organizes programs and events (independently and in association with corporates) on a local basis in communities to assist and ensure diversion of waste from our drains, water bodies and landfills and back into the economy instead, primarily by diverting waste to recycling and co-processing units. This is done through education/awareness sessions, training for segregation of waste at source, and diversion of such segregated waste to composting (onsite or offsite), recycling or co-processing units. Repro also helps corporates implement and achieve their EPR targets.

www.recyclepro.co

Services

*Awareness and Education Programs
Recycling Programs
Corporate Social Responsibility
EPR Support*



RESPONSIBILITY

Organizing various social activities for cleanliness of our mother land and spreading awareness.

Pictures are from various social activities we conducted across the country.



Awards & Recognition



Economic Times Polymer Award 2020

*For: Excellence In Recycling And Next
Generation Leader Of The Year Award*



***SWACHH BHARAT AWARD
19TH Feb 2019***



***SWACHH BHARAT AWARD
19TH Feb 2019***

***FOR WASTE MANAGEMENT -
COLLECTION, LOGISTICS AND
RECYCLING***



***WORLD ENVIROMENT EXPO
10TH FEB 2019***

Contact us



The Shakti Plastic Industries

REGISTERED OFFICE:

15/16, Govind Bhavan, Chincholi,
S. V. Road, Malad West,
Mumbai-400 064,
Maharashtra, India
Tel: 022 28725946 / 022 2872 1734

FACTORY ADDRESS:

Gut No. 159, Village Nandgaon, Behind
Rolex Inn Hotel, On Western Express
Highway No. 8, Manor, Dist. Palghar,
MH-India.
Tel: +91(2525) 237238

Email: info@shaktiplasticinds.com

Website: www.shaktiplasticinds.com

Follow us:



Registrations



ISO 9001:2015

ISO 14001:2015

SEDEX REGISTERED

LEGAL NOTICE

All rights reserved. The content of this brochure is subject to change without prior notice. All images, statements, designs, offerings included in this brochure are of the company. Unauthorised copying, reproduction and publishing of any content / product of this brochure is prohibited. The Company reserves its rights to suitable suggestions and/or complaints send an email to info@shaktiplasticinds.com